

# Equalities Monitoring – Services

## Appendix E – Economic Development

**Annual Report – 2013-14**



Published: January 2015

## Contents

1. Introduction.....	2
2. Employment Rate by Sex.....	2
3. Employment Rate by Race.....	3
4. Employment Rate by Disability.....	4
5. Education, training or employment.....	4
6. Earnings by Sex.....	5
7. Job Seekers Allowance.....	6
8. Economic Development in Bracknell Forest.....	7

# 1. Introduction

Economic deprivation directly connected to employment is one of the key aspects affecting people's lives and future prospects. It has been shown to have an impact on a variety of aspects in people's lives, including health and well being, education and housing. It is for these reasons that the Council monitors the data below.

The proportion of the resident working age population who are in employment in Bracknell Forest is very high. Data from the Grant Thornton (July 2014) indicates the area is in the top 20% of districts nationally. Furthermore, at the end of March 2014, 81.6% of the residents of working age in the Borough are in employment, compared with 78.4% in Berkshire and 71.7% nationally.

Bracknell Forest also ranks highly on having low unemployment rates amongst those of working age, as at the end of July 2014 only 1% were claiming job seekers allowance, compared with 1.2% in Berkshire and 2.4% nationally.

Again, the proportion of unemployed people in the Borough who are defined as being in Long Term Unemployment is very low. Only 23.99% of people claiming job seekers allowance have done so for at least 12 months, compared with 24.76% in Berkshire and 30.29% nationally.

(Source: Grant Thornton (Local Futures – Sept 2014)

# 2. Employment Rate by Sex

## Employment and unemployment (Apr 2013-Mar 2014)

	<b>Bracknell Forest</b>	<b>Bracknell Forest</b>	<b>South East</b>	<b>Great Britain</b>
	<b>(numbers)</b>	<b>(%)</b>	<b>(%)</b>	<b>(%)</b>
<b>All people</b>				
Economically active <sup>†</sup>	68,600	84.9	79.9	77.4
In employment <sup>†</sup>	65,900	81.6	75.5	71.7
Employees <sup>†</sup>	58,700	73	64	61.4
Self employed <sup>†</sup>	7,100	8.4	11	9.8
Unemployed (model-based) <sup>§</sup>	3,000	4.4	5.4	7.2
<b>Males</b>				
Economically active <sup>†</sup>	36,800	90.8	85.6	83.3
In employment <sup>†</sup>	35,100	86.8	80.7	76.8
Employees <sup>†</sup>	30,500	75.7	65.5	62.7
Self employed <sup>†</sup>	4,600	10.9	14.8	13.5
Unemployed <sup>§</sup>	1,700	4.5	5.6	7.6
<b>Females</b>				
Economically active <sup>†</sup>	31,800	79	74.4	71.6
In employment <sup>†</sup>	30,800	76.5	70.4	66.7
Employees <sup>†</sup>	28,200	70.3	62.6	60

Self employed <sup>†</sup>	2,500	6	7.3	6.2
Unemployed <sup>§</sup>	1,000	3.2	5.2	6.7

(Source: NOMIS – Official Labour Market Statistics )

Source: ONS annual population survey

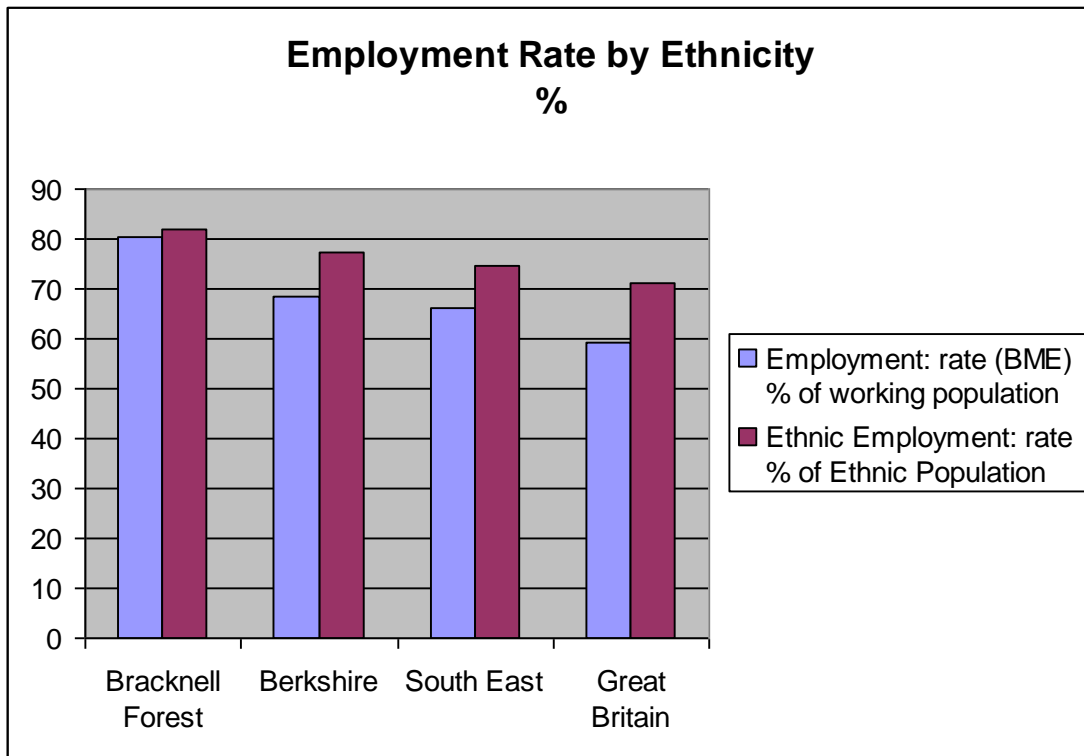
Notes: numbers are for those aged 16-64

% is a proportion of those economically inactive, except total, which is a proportion of those aged 16-64

### 3. Employment Rate by Race

	Employment: rate (BME) % of working age	Employment: rate % of working age ethnic population
Bracknell Forest	80.2	82
Berkshire	68.53	77.17
South East	66.2	74.7
Great Britain	59.3	71.1

Chart 1: Employment by Race



Source ONS census 2011

#### Comments

The data in table 3 and chart 2 shows that a larger percentage of people from Ethnic Minority groups are employed in Bracknell Forest compared to the South East and England figures, 78.5% in employment compared to 68% in the South East and 58.8% in England.

However due to small numbers, the Bracknell Forest ethnic minorities in employment figures can vary by a much larger percentage than the figures for England and South East figures; (95% confidence intervals for Bracknell Forest are +/- 18.5%, England +/- 1.1%, and South East +/- 3.2%) and, therefore, the figures should be viewed with that in mind.

## 4. Employment Rate by Disability

### Bracknell Forest residents - Employment Rate for people aged 16-64 (Apr 2013 - Mar 2014)

	Bracknell Forest	England and Wales
% In employment with health conditions or illnesses lasting more than 12 months	78.3	62.9
% Unemployed with health conditions or illnesses lasting more than 12 months	2.6	6.4
% Unemployed - All persons aged 16 - 64	3.8	7.3

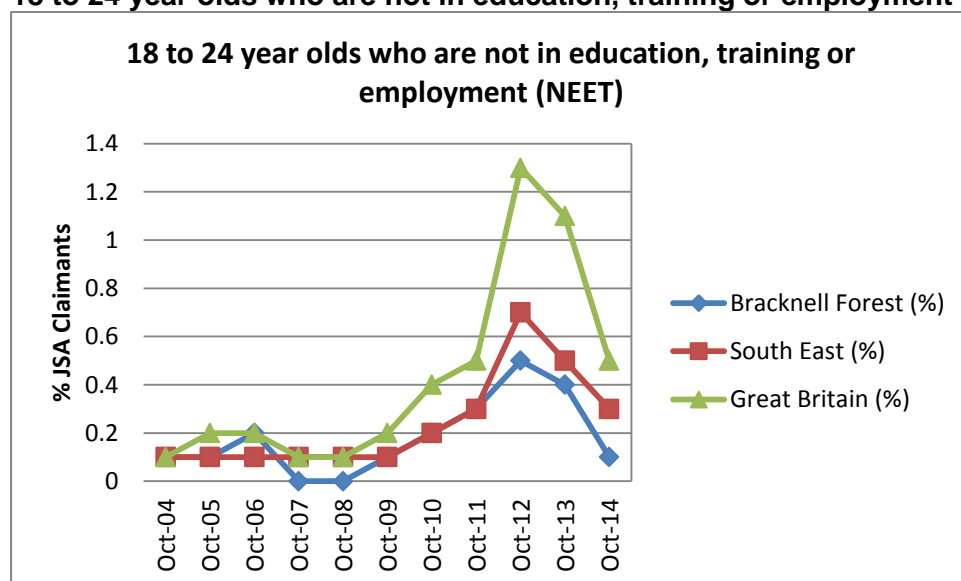
(Source: ONS, Annual Population Survey 2014 (extracted from Statshare))

#### Comments

As can be seen from the table, Bracknell Forest has higher levels of employment amongst people with long-term conditions when compared with the national average. The Council is continuing to strive to ensure employment is available for people with disabilities by raising awareness and engagement with employers.

## 5. Education, training or employment

### 18 to 24 year olds who are not in education, training or employment (NEET)



Source: ONS claimant count – October 2014

## Comments

The data shows Bracknell Forest has significantly fewer 18-24 year olds out of employment, education or training compared to the South East and the national average.

## 6. Earnings by sex

The tables below show the difference between the median earnings of men and women who either are residents or work in Bracknell Forest (**March 2013**).

<b>Earnings by residence (2013)</b>			
<b>Gross weekly pay</b>	<b>Bracknell Forest</b>	<b>South East</b>	<b>Great Britain</b>
Full-time workers	607.9	559.7	518.1
Male full-time workers	711.5	619.5	558.8
Female full-time workers	519.4	481.1	459.8
<b>Hourly pay</b>			
Full-time workers	16.11	14.37	13.18
Male full-time workers	17.75	15.33	13.8
Female full-time workers	13.39	12.9	12.27
Source: ONS annual survey of hours and earnings - resident analysis			
Note:	Median earnings in pounds for employees living in the area.		

<b>Earnings by workplace (2013)</b>			
<b>Gross weekly pay</b>	<b>Bracknell Forest</b>	<b>South East</b>	<b>Great Britain</b>
Full-time workers	669.3	536.6	517.8
Male full-time workers	782.6	589.3	558.3
Female full-time workers	519.2	465.6	459.6
<b>Hourly pay</b>			
Full-time workers	17.93	13.75	13.17
Male full-time workers	20.9	14.71	13.8
Female full-time workers	13.66	12.41	12.27
Source: ONS annual survey of hours and earnings - workplace analysis			
Note:	Median earnings in pounds for employees working in the area.		

## Comments

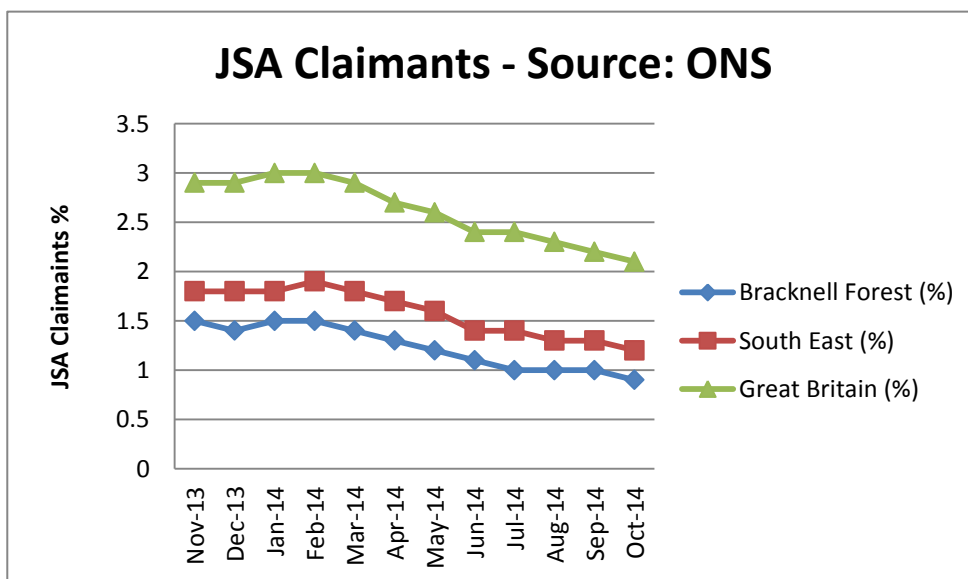
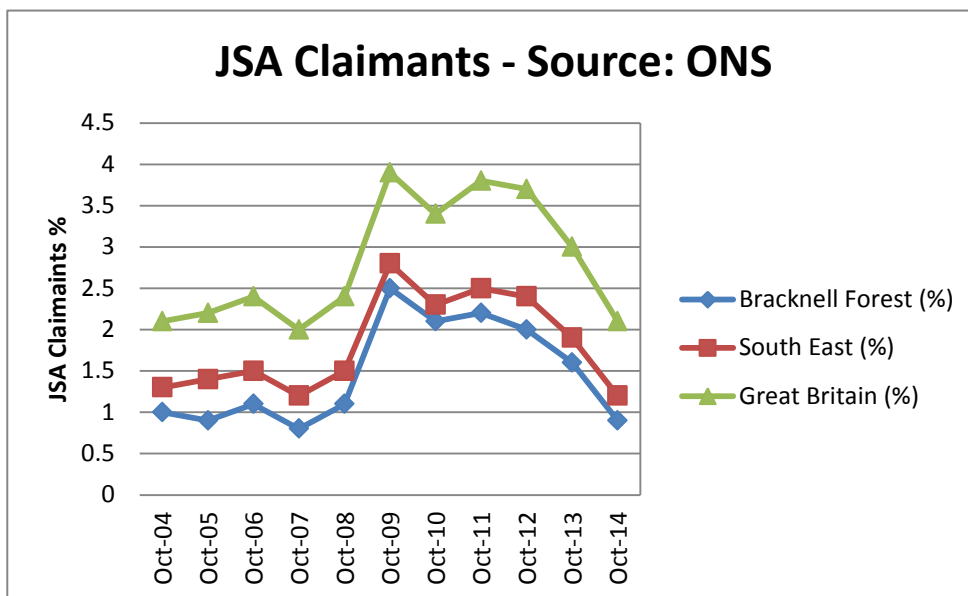
In both tables it is clear that compared to national and regional averages, Bracknell Forest residents and employees earn considerably more. However, the comparison between wages of males and females is more apparent in Bracknell Forest, than the South East and nationally, with female workers earning less than men.

It is true that the female resident or worker in Bracknell Forest earns more than the national average when the sexes are combined, though as the living is specific to Bracknell Forest, the comparison between male and females is significant.

## 7. Job Seekers Allowance

JSA claimant count records the number of people claiming Jobseekers Allowance (JSA) and National Insurance credits at Jobcentre Plus local offices. People claiming JSA must declare that they are out of work, capable of, available for and actively seeking work during the week in which the claim is made.

The percentage figures express the number of claimants resident in an area as a percentage of the working age population resident in that area. Working age is defined as 16-64 for males and 16-59 for females.



Source: NOMIS - Official Labour Market Statistics 2014

## Comments

The percentage of working age people who claim job seekers allowance is relatively low, ranging between 1.7% and 1% of the working population during 2013-14. Trend data from the last 10 years show that Bracknell Forest mirrors what is happening both in the South East and nationally but that the Bracknell Forest figures consistently remain lower.

## 8. Economic Development in Bracknell Forest

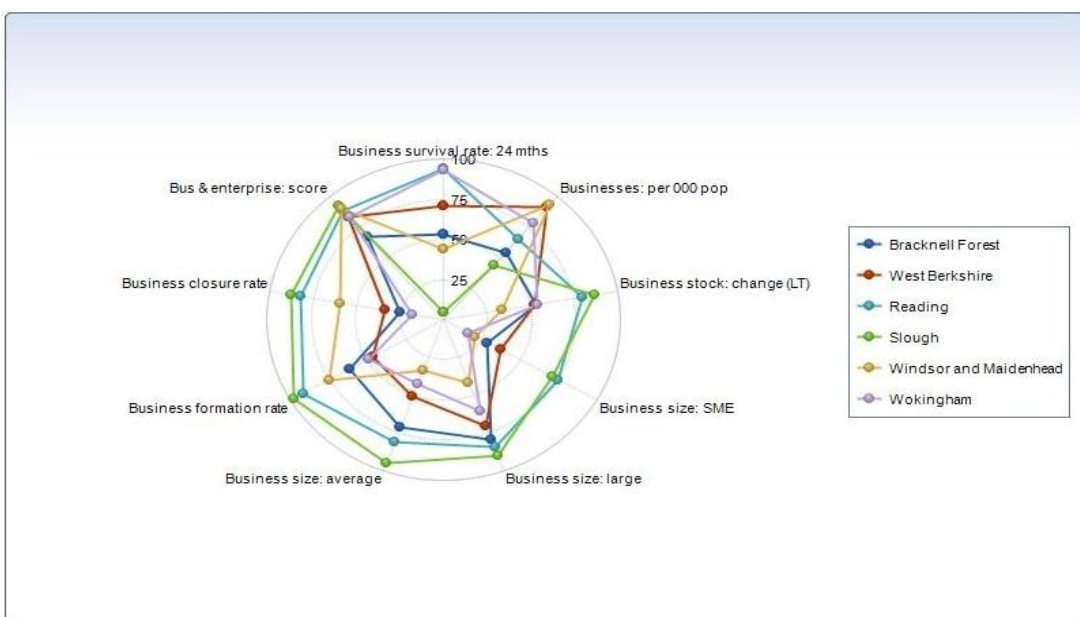
Bracknell Forest is an exceptional place for business and individuals. In 2025 the Borough will be amongst the best places to do business at the heart of the Thames Valley. It will be an inspirational place for families to grow and thrive. The environment will be protected, town centre modern and schools will be good. New homes will add to the community and be sustainable. Bracknell Forest will be amongst the best in Europe for business friendliness.

A number of projects are underway to achieve the Economic Development vision. Bracknell was designated a new town in 1949 and, as a consequence, much of the town centre was designed in the 1960s. Because of this, the town is undergoing regeneration due to be completed in 2016.

A new Enterprise and Innovation Hub was created in the town centre by converting empty office space to provide a 'one stop shop' facility and services for business start ups. The Hub is providing workshops and network events to improve the performance of small businesses as well as operating a drop in centre with a Business Club membership providing free internet connection, tea/coffee as well as providing training for businesses in aspects such as marketing.

Work has already started to encourage people to start their own businesses, while Bracknell and Wokingham College offer courses on how to start a business. This is starting to have an impact in Bracknell Forest. These developments should improve the employment prospects of all communities living in Bracknell Forest in the future.

### Business and Enterprise scores





## **Comments**

The above graph compares the Berkshire area in key indicators related to Businesses. It is a scoring process against 100 and the closer to the outer circle shows better performance as a comparison. For example the graph indicates that Bracknell Forest has a large proportion of large sized businesses, which strengthens the local economy. However, the proportion of SME sized businesses is low, which also provide an important part of the economy.

The report this year does not contain any recommendations since the findings did not support any.